



RAIN RESISTANT ROOF LOUVER



Our Product Ranges

Dampers

- 1 Fire Dampers
- 2 Fire / Smoke Dampers
- 3 Volume Control Dampers
- 4 Motorized Control Dampers
- 5 Pressure Relief Dampers /Non Return Dampers

Variable Air Volumes

- 6 Pressure Independent VAV
- 7 Constant Air Volume VAV
- 8 By Pass VAV

Louvers

- 9 Sand Trap Louvers
- 10 Acoustic Louvers
- 11 Stationery Louvers / Architectural Louvers
- 12 Storm Louvers
- 13 Weather Louvers

Sound Attenuators

- 14 Rectangular Sound Attenuators
- 15 Circular Sound Attenuators
- 16 Crosstalk Attenuators

Electric Duct Heaters

- 17 Flange & Slip 'n' Type
- 18 Modulating & On/Off Type

Air Outlets

- 19 Registers & Grilles
- 20 Diffusers (Linear Diffusers, Sq. & Rect. Ceiling Diffusers, Round Diffusers, Jetflow Diffusers)
- 21 Swirl Diffusers & Disc Valves
- 22 Drum Louvers

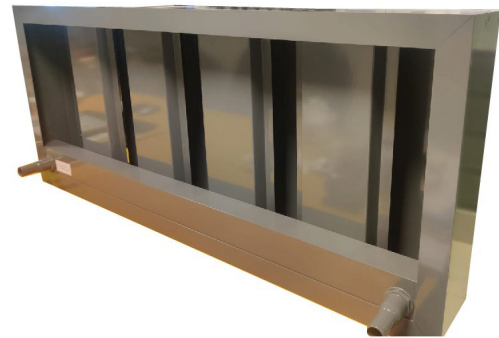


INDEX

	Page
Introduction & Key Features	04
Model Reference & Construction Details	05
Concept Drawing.....	06



Airwellcare RAIN RESISTANT LOUVERS Integrating into the building design is a priority. Rain & Storm-Resistant Louvers keep 100% of water out of buildings and are 20 times more effective at stopping rain than conventional louvers.



KEY FEATURES

- Keeping up to 100% of rain out of your building is a priority
- Sensitive equipment will be housed close to the louver system.
- Rain Water collection point to reuse the water.
- Sun Shade Roof, prevent from direct sun light throughout the day.
- Constructed with corrosion resistant materials to provide many years of trouble free, dependable service.
- Powder Coated Finish to provide an aesthetic view.
- 50% and more Free Area Roof Opening for Fresh Intake Air.

Model : AHS RR 300

AIRWELLCARE Rain Resistant Roof Louver System features fresh intake Air to the room as well preventing the Rain & Direct sun-light, saving the installed Electro-Mechanical Equipments, AHUs, FAHUs, and all other comprehensive equipments to protect from bad weather conditions.



STANDARD CONSTRUCTION

Frame

2.0 mm Thick. High Quality Extruded Aluminium Frame.

Louver Channels

Louver channel systems of 3.0mm Thick. High Quality Extruded Aluminium.

Rain Gutters

Rain Gutter Channels of 2.0mm Thick. High Quality Extruded Aluminium.

Water Flow Valves

Water Flow Control Valves are fixed on the Corners for water collection.

Finish & Colour

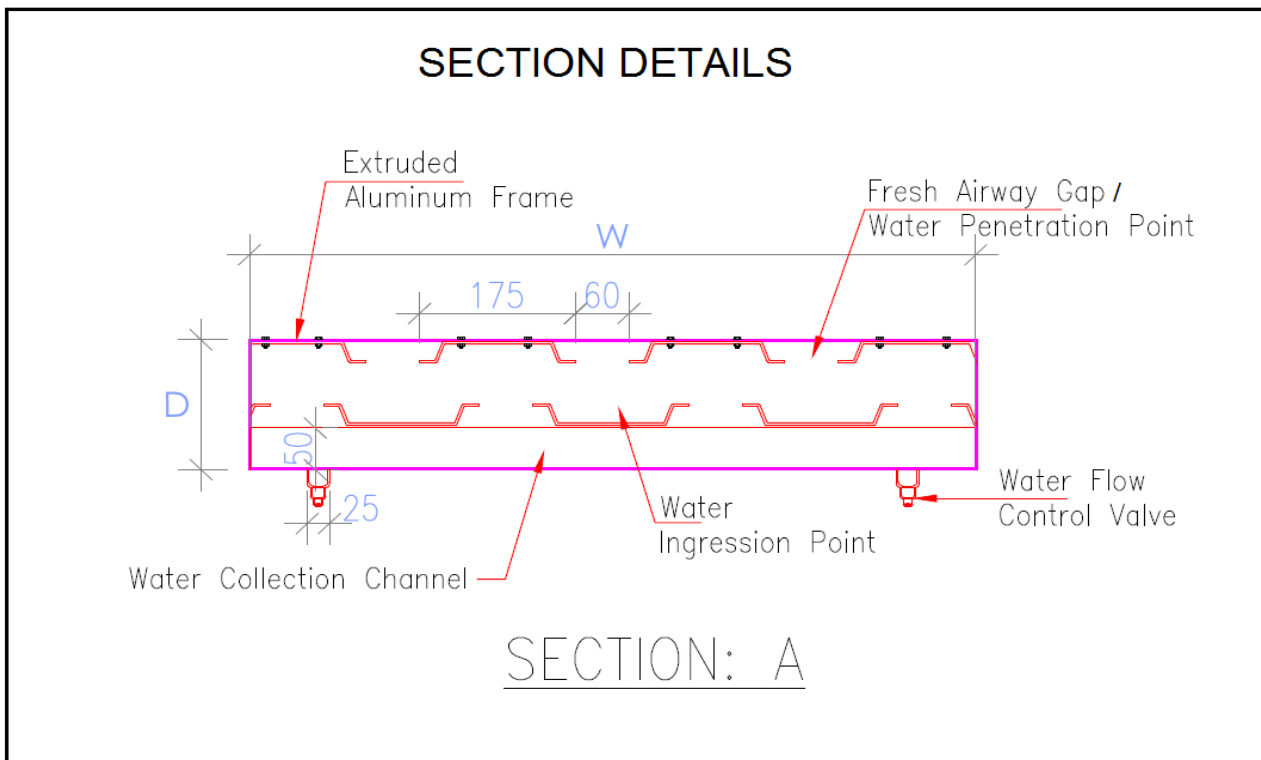
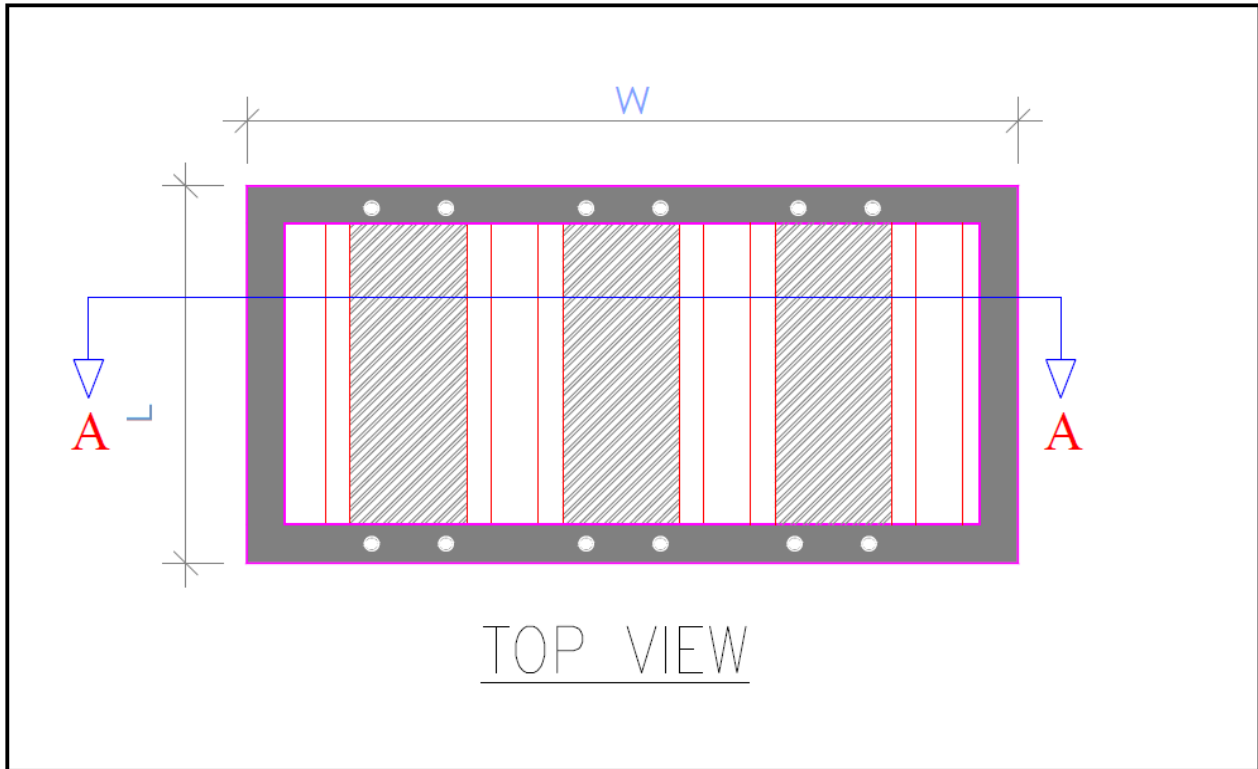
Powder Coating finish as per PEF RAL Colour Codes

Optional Construction

- Aluminium
- Galvanized Steel
- Stainless Steel (304/316)

Dimensions (W x L) mm
Clear Opening Dimensions
Maximum Single Module Construction
3000 x 2500
Mnimum Single Module Construction
As per Customer Requirements

DRAWINGS





P.O Box 2620

Office & Factory at No.3, Umm Al Thoub 7,

Al Ittihad Street, Modern Industrial Area, Umm Al Quwain, United Arab Emirates

Tel. +971 (6) 768 0473

Email : sales@airwellcare.com

Web : www.airwellcare.com

